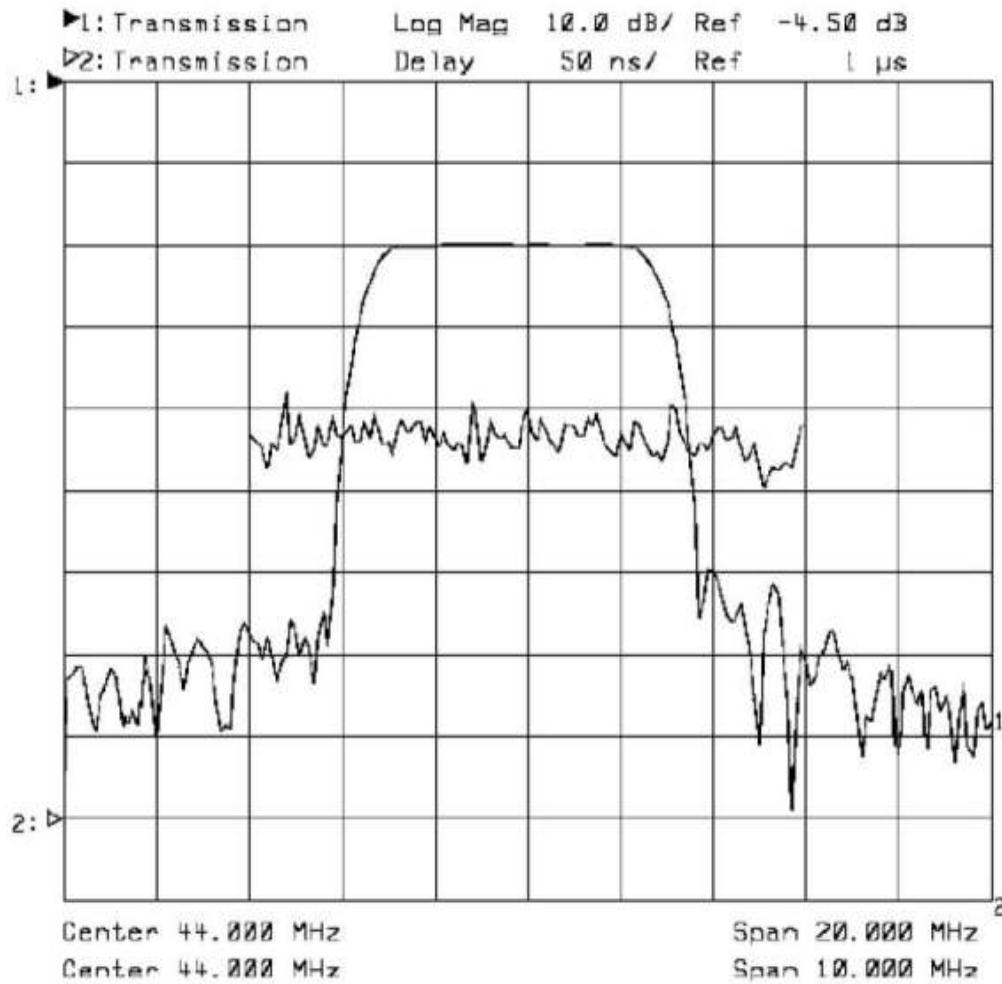


DESCRIPTION

- 43.75 MHz SAW bandpass filter with 6 MHz bandwidth for Cable Modem and Set-Top box applications.
- SIP5D Package
- RoHS compliant.

TYPICAL PERFORMANCE



SPECIFICATION

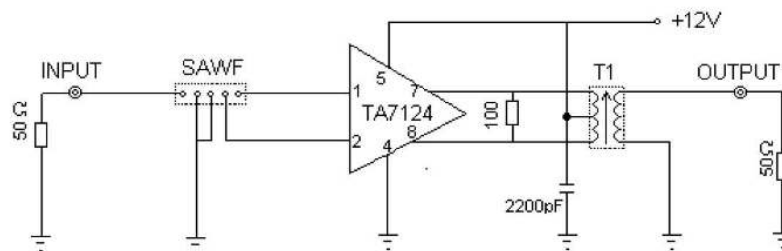
Parameter	Min	Typ	Max	Units
Center Frequency (Fc) ¹		43.75		MHz
Insertion Loss ²	14.5	15	16.5	dB
3 dB Bandwidth		6		MHz
30 dB Bandwidth		76		MHz
Rejection, 39.75 MHz	38			dB
Rejection, 40.75 MHz		2.7		dB
Rejection, 46.75 MHz		2.7		dB
Rejection, 41.22 MHz		0.2		dB
Rejection, 46.28 MHz		0.2		dB
Rejection, 47.75 MHz	37			dB
Rejection, 35 to 39 MHz	42			dB
Rejection, 39 to 39.75 MHz	37			dB
Rejection, 47.75 to 50 MHz	36			dB
Rejection, 50 to 55 MHz	42			dB
Input Impedance		1.1 K Ω //16.4pf		
Output Impedance		1.1 K Ω //5.0pf		

- Notes:
1. Defined as the average of the lower and upper 3 dB frequencies.
 2. Value at 36.15 MHz.
 3. Measured over Fc +/- 3.8 MHz.
 4. Specifications are guaranteed over the operating temperature range.

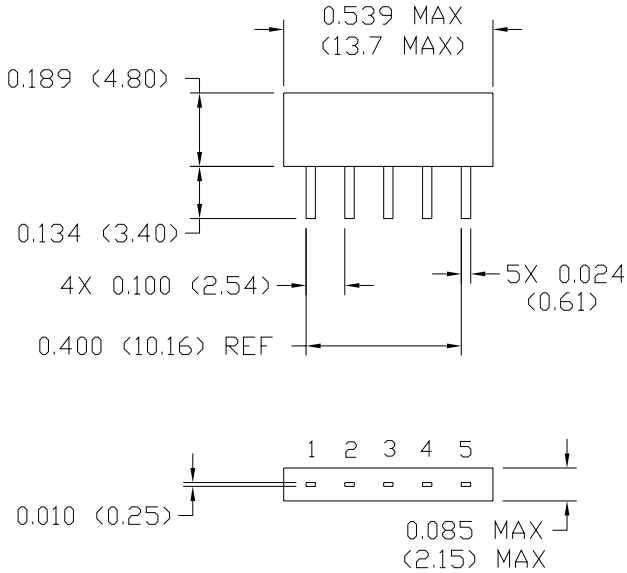
MAXIMUM RATINGS

Parameter	Min	Max	Units
Storage Temperature Range	-40	+85	°C
Operating Temperature Range	-20	+75	°C
Max. D. C. Voltage between each terminal		10	V

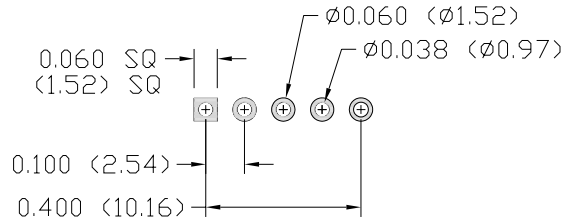
TEST CIRCUIT



PACKAGE OUTLINE



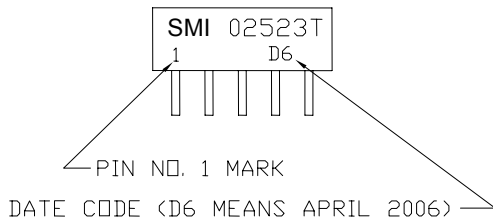
SUGGESTED PCB FOOTPRINT



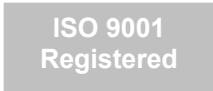
PIN	DESIGNATION
1	INPUT
2	INPUT
3	GROUND
4	OUTPUT
5	OUTPUT

NOTE:
1. DIMENSIONS IN () ARE IN MM.
ALL TOLERANCES ARE .XXX = ±.006 (±.15)

MARKING



Month = 1 2 3 4 5 6 7 8 9 10 11 12
Month Code = A B C D E F G H I J K L



All specifications are believed to be accurate and reliable. However, Spectrum Microwave reserves the right to make changes without notice.
© 2010 All rights reserved.